

# T-SHIRTS AND VESTS

## Men's T-Shirt (Code No: JC001)

(see example pictures)

About - The Cool T is understated yet high performing, allowing you to focus fully and unlock your potential. Crafted from a lightweight Neoteric™ fabric which wicks sweat away from the skin to ensure you stay cool and dry. With a crew neck and relaxed fit this t-shirt will take the heat off you whether you're working out or taking part in a charity run.

**Fabric** - 100% Polyester

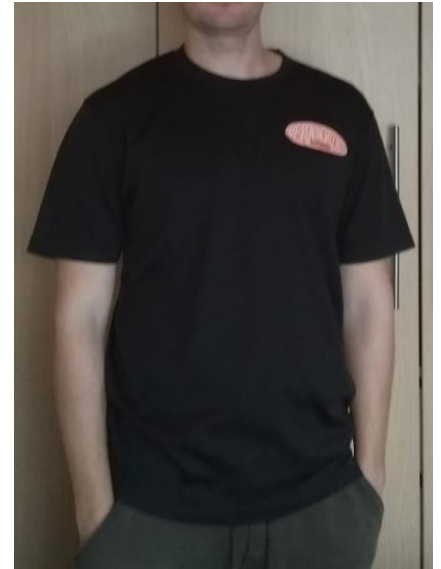
**Weight** - 140gsm



Specification - AWDIs' own Neoteric™ textured fabric with inherent wickability and quick drying properties. Self-fabric taped back neck. Set in sleeve design. Twin needle stitching detail. Self-fabric crew neck. Simple tear off label makes it perfect for rebranding. UPF 30+ UV protection. Worldwide Responsible Accredited Production (WRAP) certified production.

Washing Instructions - Machine wash 30°. Do not bleach. Do not tumble dry. Do not iron. Do not dry clean

**Sizes:** XS 35" S 38" M 40" L 43" XL 45" 2XL 48" 3XL\* 50" 4XL† 53" 5XL† 55"  
\*3XL only available in these colours. †4XL and 5XL only available in these colours. Full spec of colours is available to choose from.



Colours as follows:

-  Airforce Blue
-  Baby Pink
-  Charcoal\*
-  Arctic White\*†
-  Bottle Green
-  Combat Green
-  Ash
-  Burgundy
-  Desert Sand



• Electric Green



• Electric Orange



• Electric Pink



• Electric Yellow



• Fire Red\*



• French Navy\*†



• Gold



• Hawaiian Blue



• Heather Grey



• Hot Chocolate



• Hot Pink\*



• Ink Blue



• Jade



• Jet Black\*†



• Kelly Green



• Lime Green\*



• Magenta Magic



• Mint



• Olive



• Orange Crush\*



• Oxford Navy



• Plum



• Purple\*



• Red hot Chilli



• Reflex Blue



• Royal Blue\*



• Sapphire Blue\*



• Sherbet Lemon



## Women's T-Shirt (Code No: JC005)

(see example pictures)

About - This classic Cool T is cut to a feminine fit integrating form and function to unlock your fitness potential. Crafted from a lightweight Neoteric™ fabric to wick sweat away from your skin. With a self-fabric crew neck and cap sleeves, its non-restrictive design makes it an essential for your activewear wardrobe.

**Fabric** - 100% Polyester

**Weight** - 140gsm



Specification - AWDIs' own Neoteric™ textured fabric with inherent wickability and quick drying properties. Self-fabric crew neck. Set in sleeve design. Girlie fit. Curved back hem for added comfort. Fabric collar and cuffs. Self-fabric taped back neck. Simple tear off label makes it perfect for rebranding. UPF 30+ UV protection. World Responsible Accredited Production (WRAP) certified production.

Washing Instructions - Machine wash 30°. Do not bleach. Do not tumble dry. Do not iron. Do not dry clean

**Sizes:** XS 8 S 10 M 12 L 14 XL 16 2XL\* 18

\*2XL only available in these colours Full spec of colours is available to choose from.

Colours as follows:

-  Arctic White\*†
-  Electric Green
-  Fire Red\*†
-  Bottle Green
-  Electric Orange
-  French Navy\*†
-  Burgundy
-  Electric Pink
-  Hot Pink\*
-  Charcoal
-  Electric Yellow
-  Jet Black\*†



## Kid's T-Shirt (Code No: JC01J)

(see example pictures)

About - The kid's version of the adult classic, the Kids cool T is perfect for clubs, teams and school. This lightweight Neoteric™ fabric t-shirt with a classic crew neck and relaxed fit is great for school sports day and features UPF 30+ protection.



**Fabric** - 100% Polyester

**Weight** - 140gsm

**Specification** - AWDi's own Neoteric™ textured fabric with inherent wickability and quick drying properties. Self-fabric taped back neck. Self-fabric crew neck. Set-in-sleeve design. Simple tear off label makes it perfect for rebranding. UPF 30+ UV protection. World Responsible Accredited Production (WRAP) certified production.

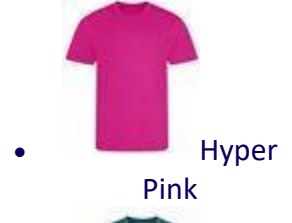
**Washing Instructions** - Machine wash 30°. Do not bleach. Do not tumble dry. Do not iron. Do not dry clean

**Sizes:** XS 3/4 S 5/6 M 7/8 L 9/11 XL 12/13

Full spec of colours is available to choose from. Please note the sizes above are based on kid's age!!

Colours as follows:

-  Arctic White
-  Electric Green
-  Fire Red
-  Bottle Green
-  Electric Orange
-  French Navy
-  Burgundy
-  Electric Pink
-  Heather Grey
-  Charcoal
-  Electric Yellow
-  Hot Pink



## Men's Vest (Code No: JC007)

(see example pictures)

About - Your go to vest for the warmer months of the year. Made from a lightweight Neoteric™ fabric and with a sporty fit and curved back hem, this vest has been designed to keep you cool and comfortable whilst working up a sweat. Uncompromising in design simplicity this vest provides unrestricted performance in letting you push towards your goals.



**Fabric** - 100% Polyester

**Weight** - 140gsm

**Specification** - AWDIs' own Neoteric™ textured fabric with inherent wickability and quick drying properties. Sporty fit. Self fabric binding around neckline and armholes. Curved back hem. Simple tear off label makes it perfect for rebranding. UPF 30+ UV protection. Worldwide Responsible Accredited Production (WRAP) certified production.

**Washing Instructions** - Machine wash 30°. Do not bleach. Do not tumble dry. Do not iron. Do not dry clean

**Sizes:** S 34" M 38" L 41" XL 44" 2XL 47"

Full spec of colours is available to choose from.

Colours as follows:

-  Arctic White
-  Electric Orange
-  Hot Pink
-  Bottle Green
-  Electric Yellow
-  Jet Black
-  Charcoal
-  Fire Red
-  Kelly Green
-  Electric Green
-  French Navy
-  Lime Green





• Orange Crush



• Royal Blue



• Sun Yellow



• Purple



• Sapphire Blue



• Electric Pink



• Jade

## Women's Vest (Code No: JC015)

(see example pictures)

About - Uncompromising in design simplicity, this vest provides unrestricted performance letting you push towards your goals. Crafted from a lightweight, Neoteric™ fabric to wick sweat away from the skin. The scoop neckline and racer back style ensure a natural range of movement whilst working up a sweat.

**Fabric** - 100% Polyester

**Weight** - 140gsm



Specification - Girlie fit. Racer back style. Curved back hem for added comfort. AWDiS' own Neoteric™ texture fabric with inherent wickability and quick drying properties. Self-fabric binding around neckline and armholes. Simple tear off label makes it perfect for rebranding. UPF 30+ UV protection. Worldwide Responsible Accredited Production (WRAP) certified production.

Washing Instructions - Machine wash 30°. Do not bleach. Do not tumble dry. Do not iron. Do not dry clean

**Sizes:** XS 8 S 10 M 12 L 14 XL 16

Full spec of colours is available to choose from.

Colours as follows:

-  Arctic White\*†
-  Electric Pink
-  Hot Pink
-  Charcoal
-  Electric Yellow
-  Jet Black\*†
-  Electric Green
-  Fire Red
-  Purple\*
-  Electric Orange
-  French Navy\*
-  Royal Blue\*



• Sapphire Blue

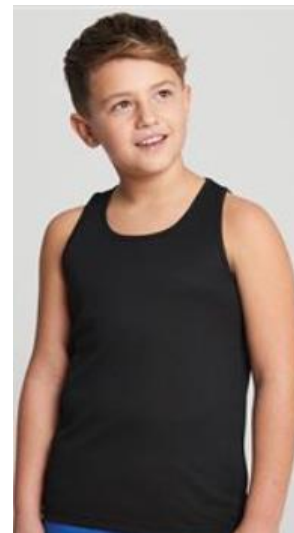
## Kid's Vest (Code No: JC07J)

(see example pictures)

About - Sporty fit and bold in colour, the Kids cool vest is a gym kit essential. This vest has a sporty fit with a curved back hem for additional comfort and self-fabric binding around the neckline and armholes. Made from a lightweight Neoteric™ fabric to wick sweat away from the skin, it's the perfect vest for school sports.

**Fabric** - 100% Polyester

**Weight** - 140gsm



Specification - Sporty fit, AWDi's own Neoteric™ textured fabric with inherent wickability and quick drying properties, self-fabric binding around neckline and armholes, curved back hem, simple tear off label makes it perfect for rebranding, name label, UPF 30+ UV protection, Worldwide Responsible Accredited Production (WRAP) certified production

Washing Instructions - Machine wash 30°. Do not bleach. Do not tumble dry. Do not iron. Do not dry clean

**Sizes:** XS 3/4 S 5/6 M 7/8 L 9/11 XL 12/13

Full spec of colours is available to choose from. Please note the sizes above are based on kid's age!!

Colours as follows:

